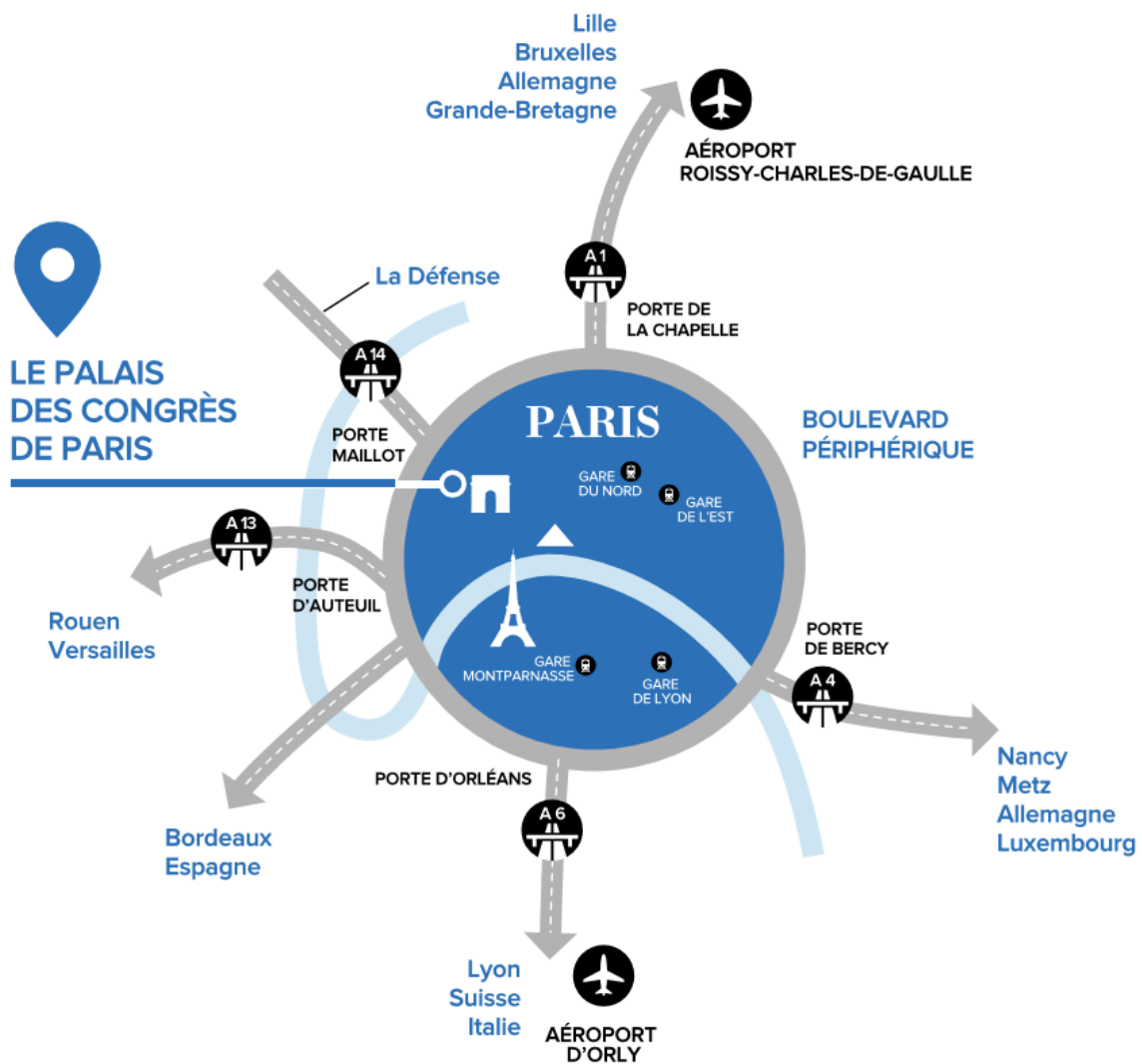
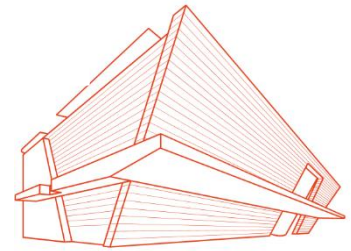


ACCESS TO THE CONGRESS CENTER

Address :
2 Place de la Porte Maillot
75017 Paris – France



<https://www.palaisdescongresdeparis.com/en/site/palais-des-congres-paris/acces>

Due to construction works at Porte Maillot, we recommend that you use public transport as part of your visit to the Palais des Congrès de Paris.



Metro (subway) : **Line 1** (La Défense / Château de Vincennes)
 “Neuilly-PorteMaillot” Station-Palais des Congrès exit

Bus: Lines PC1, PC2, PC3, 82, 73, 43, 244

RER suburban trains: Line C (Pontoise) “Neuilly-PorteMaillot” Station -Palais des Congrès exit

BY PLANE

AIRPORT

Bus Direct shuttle from Charles de Gaulle airport
Paris–Beauvais shuttle service



around 40 minutes from Charles de Gaulles airport (CDG)
around 30 minutes from Orly airport
due to construction works, we suggest you to take more time to go to the airport

BY CAR

Please, note that it will be difficult for cars to access due to construction works.

From A1, A4, A6, A10, A15 :

Take Paris direction, access via western section of the ring road, exit Porte des Ternes.

From A3, A13, A14 :

Take Paris direction, access via southern section of the ring road, exit Porte Maillot.

[Click here to reserve a parking space at the best rate with OPnGO](#)

(almost 1 700 parking spaces with direct access to the Palais des Congrès)