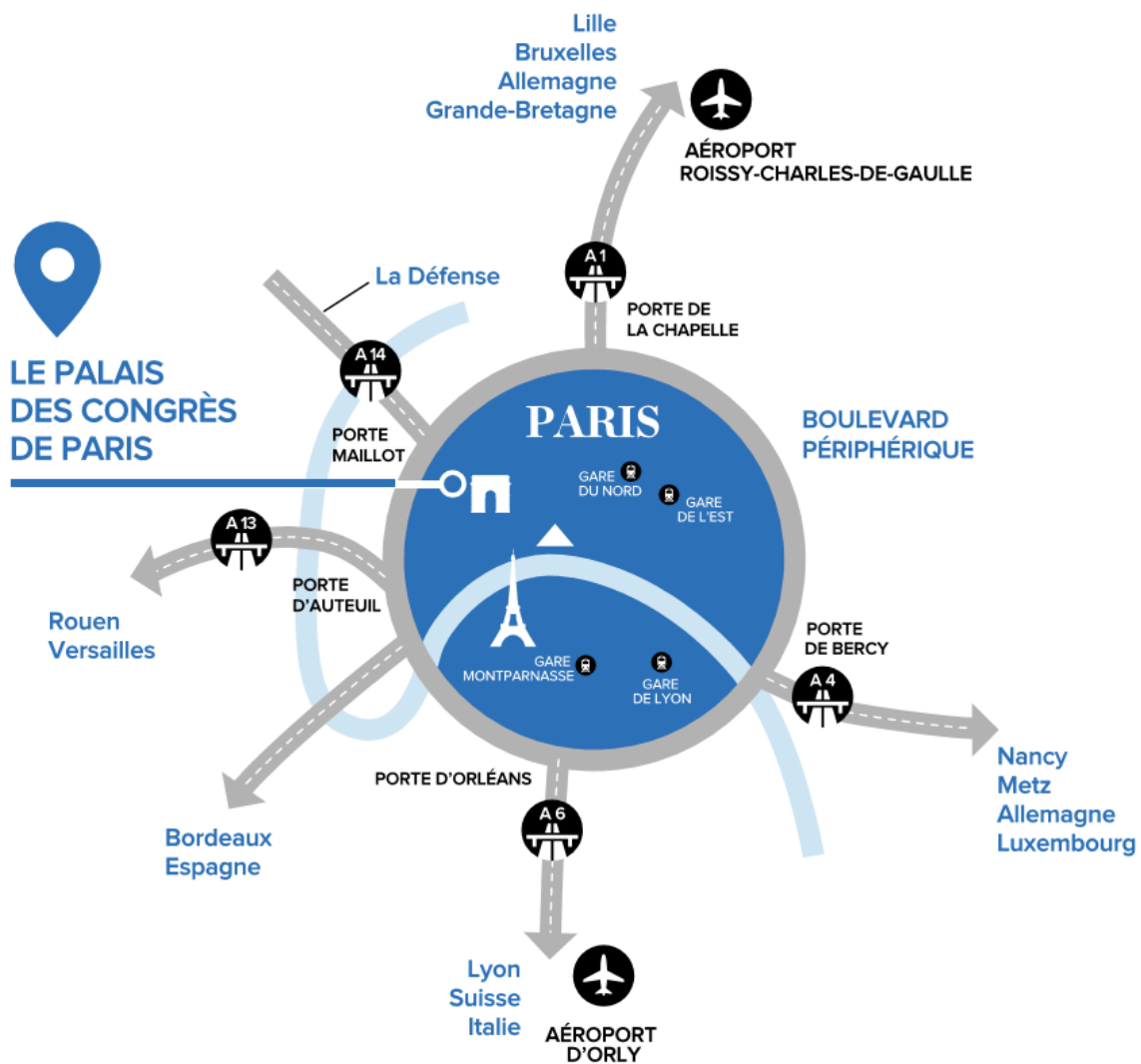
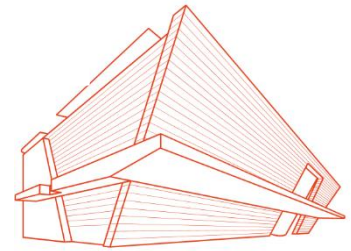


# ACCESS TO THE CONGRESS CENTER

Address :  
2 Place de la Porte Maillot  
75017 Paris – France



<https://www.palaisdescongresdeparis.com/en/site/palais-des-congres-paris/acces>

---

Due to construction works at Porte Maillot, we recommend that you use public transport as part of your visit to the Palais des Congrès de Paris.



Non contractual document subject to changes - dated June 30, 2022

**Metro** (subway): **Line 1** (La Défense/Château de Vincennes) “Neuilly-Porte Maillot” Station - Palais des Congrès exit

**Bus**: Lines PC1, PC2, PC3, 82, 73, 43, 244

**RER** suburban trains: Line C (Pontoise) “Neuilly-Porte Maillot” Station - Palais des Congrès exit

Construction works are all around the Palais des Congrès  
Access to the Palais des Congrès is subject to changes at any time.

## **BY PLANE**

around 40 minutes from Charles de Gaulles airport (CDG) around 30 minutes from Orly airport  
*due to construction works, we suggest you to take more time to go to the airport*

## **BY CAR**

**Please, note that it will be difficult for cars to access due to construction works.**

From A1, A4, A6, A10, A15 :

Take Paris direction, access via western section of the ring road, exit Porte des Ternes.

From A3, A13, A14 :

Take Paris direction, access via southern section of the ring road, exit Porte Maillot.

**parking space** (almost 1 700 parking spaces with direct access to the Palais des Congrès)

> <https://www.viparis.com/fr/site/palais-des-congres-paris/acces>

<https://fr.parkindigo.com/https://fr.parkindigo.com/>